

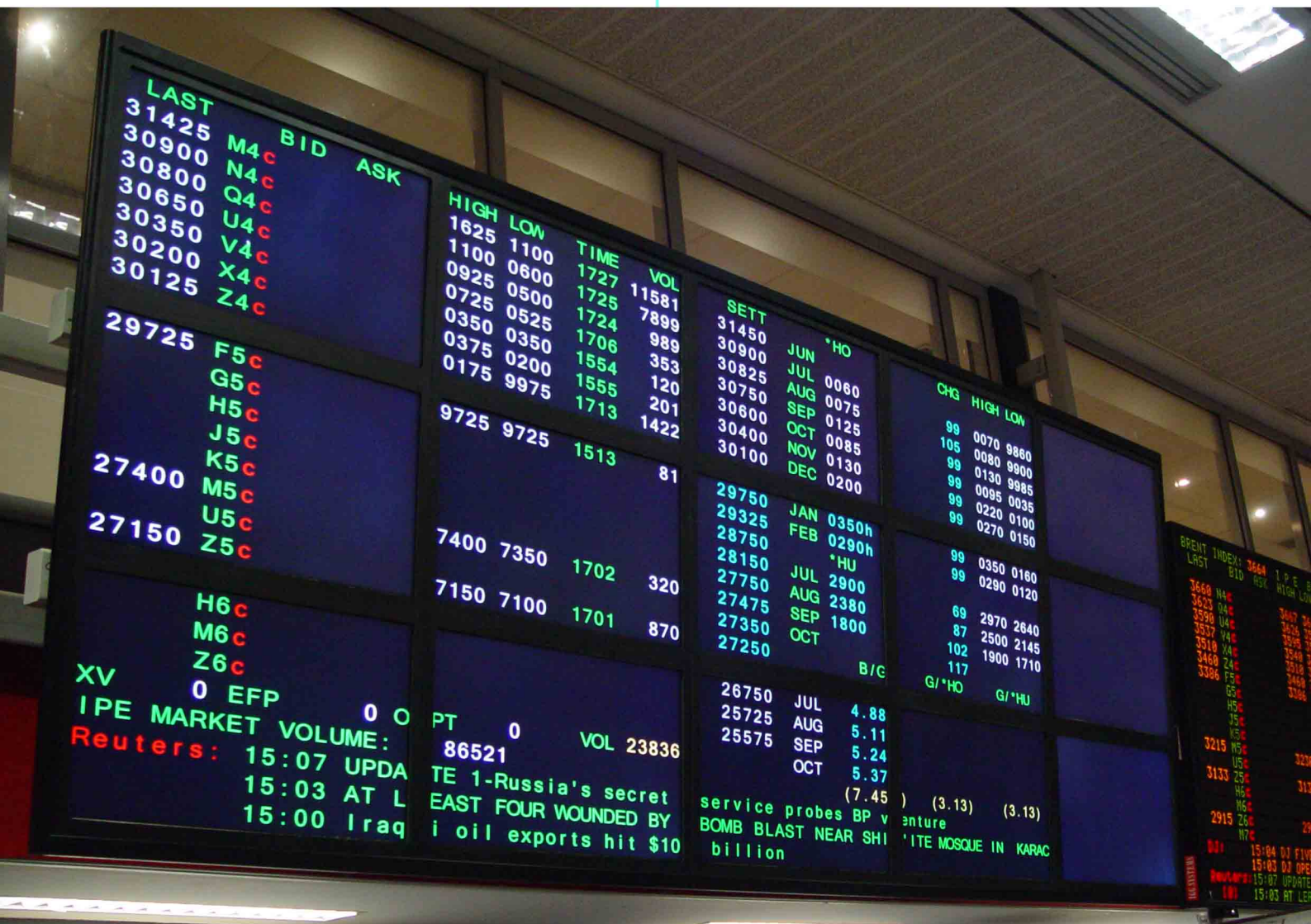
IPE

INFORMATION MUST BE AVAILABLE ALL OF THE TIME

solutions

The International Petroleum Exchange of London Limited is a Recognised Investment Exchange. It is Europe's leading energy futures and options exchange. The IPE provides a highly regulated marketplace where industry participants use futures and options to minimise their price exposure in the physical energy market.

Over \$2 billion daily in underlying value is traded on the IPE.



reliable

"The only constant through out the project has been Harp, what ever the hurdle was introduced Harp would clear it and move on. We found we could rely on Harps team to not only the job done on time but in the approval process for software development, concept proving, planning applications, structural engineers reports, risk assessments and method statements.

The markets closed 7.30 p.m. Friday with an old wall board and the traders had a new wall board ready for use 8.00 a.m. Monday morning."

Tim Swanwick
IPE

CASE STUDY

Challenge

IPE installed their original wall boards over 8 years ago. Since that time the original manufacture of the wall boards have gone bust twice and taken over three times. Spares to keep the existing wallboards going are now non existent, spares have to be found or made available. The only solution available to IPE was to replace one of the existing wallboards with a new one and cannabalise the old board for spares to keep the other wall boards going. Harp were recommended to IPE as a suitable company that would have an appreciation of different display technologies and have the ability to develop software that could that the existing feed to the wall board and convert into a suitable output for video wall processor's.



Old Wall board showing line 7 failing.

The position of the wall board had to remain in a similar position so that all of the existing trader positions could see the information on the wall board. Reliability was key also to be a key factor. As over \$2 billion of oil is traded on the floor each day it is vital that the technology should not fail.

As the trading floor opens at 9.00 in the morning and does not close until 19:30 in the evening and operates 5 days a week meant that the wall board had to be changed out in a weekend, ready for opening Monday.

Strategy

The key decision on the strategy was which was the best technology to go with. Rear projection would offer seamless screen joins but take up a large amount of depth and are dependent on lamps that last 8,000 hours on average. Where as the large LCD screens offer small depth and 5 years of life before any lamps need changing. It was a straight forward decision as far as the most reliable technology, the 40" LCD. However, the gap between screens could be a major issue. Harp decided to demonstrate the wallboard at the IPE backup site to get acceptance of the traders who have to use the wallboard. Because of the easier to read fully formed characters generated on the LCD the traders accepted the wallboard whole heartedly even with the screen gaps.

Solution

Once the principle had been accepted that the LCD solution would offer better reliability and readability of the information was not an issue Harp devised a plan that would ensure the system could be completely tested off line so that the walls hardware and software could all be tested off line. So for two weeks before the install the complete system was built at IPE's back up facility and proved to work on live feeds from the trading floor. As much of the steel work was installed prior to the weekend installation reducing time and risk to the project

The system had to work 9.00 a.m. day 1.



150 mm Deep WallBoard

Result

On Monday morning 9.00 the system was up and working for the traders to start dealing. IPE now has enough spares to see them through the next couple of years to keep their existing LED wall boards operational.

Traders prefer the new wall board to old on the fact that the characters are easier to read and full colour is available.



New and old style wall board.



HARP

VISUAL COMMUNICATION SOLUTIONS

Harp Visual Communications Limited
Unit 7 Swanwick Business Centre
Bridge Road
Lower Swanwick
Southampton
SO31 7GB
Tel. 01489 580011
Fax. 01489 580022
www.harvisual.com